



COLORADO

Department of Transportation

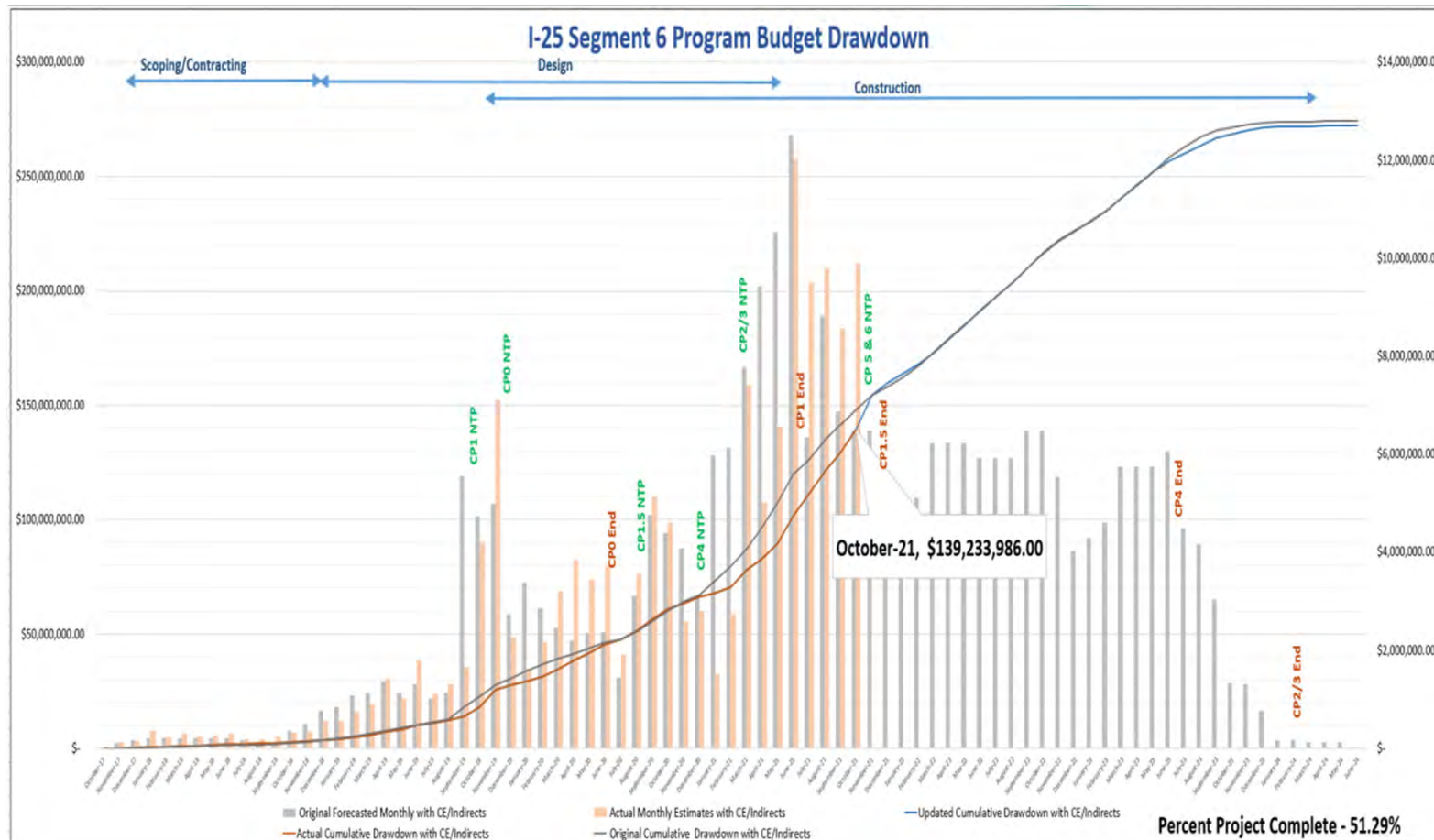
I-25 North Express Lanes: Segment 6 – Berthoud to Johnstown I-25 Coalition Update

Dec. 1, 2021



Programmatic Update I-25 Segment 6 Update

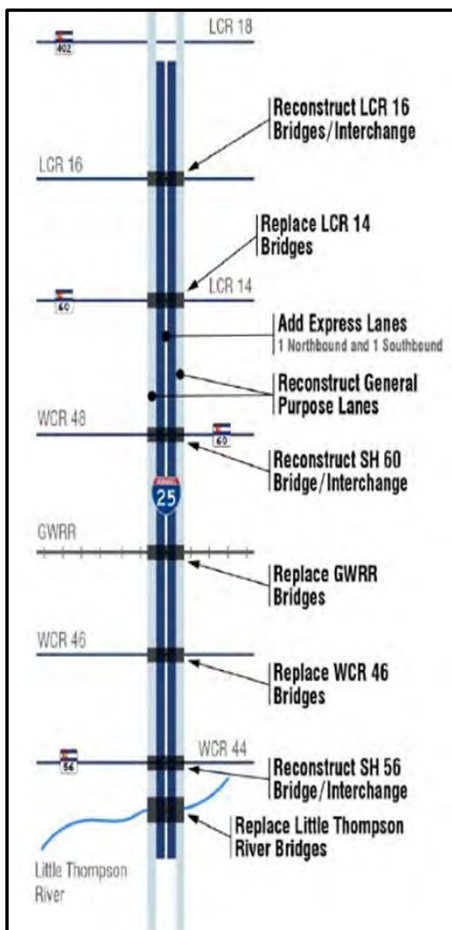
I-25 Segment 6 Program Budget Drawdown



- **Total Project:** 51% Complete
- **Total Construction:** 43% Complete
- Making great construction progress with a warm Fall

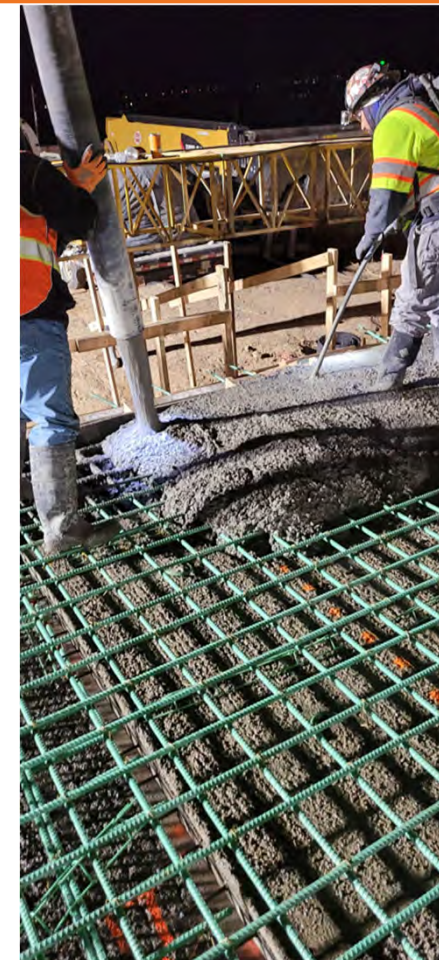


Summer/Fall 2021 Construction I-25 Segment 6 Update



Major Structure Work Progress

- LCR 16 (2 bridges) - 35% complete
- LCR 14 (2 bridges) - 35% complete
- CO 60 (2 bridges) - 85% complete
- GWRR (2 bridges) - 40% complete
- WCR 46 (2 bridges) - 30% complete
- Mobility hub pedestrian underpass - 100% complete
- CO 56 (2 bridges) - 85% complete
- Little Thompson Bridge (southbound) - 100% complete
- Little Thompson Bridge (northbound) - 100% complete





CO 56 Construction I-25 Segment 6 Update

- Messaged 140-day Closure
- Opened at 114 days and before Thanksgiving

Pre-Closure (July 2021)



Right Before Opening
(November 2021)





CO 56 Construction I-25 Segment 6 Update

Next Steps:

- Construct and tie-in southbound on and off ramps - complete in Spring
- Construct and pave southbound lanes - complete in late Summer (waiting for consistently good temperatures)
- Construct Mobility Hub - complete and operational by end of the project (2024)

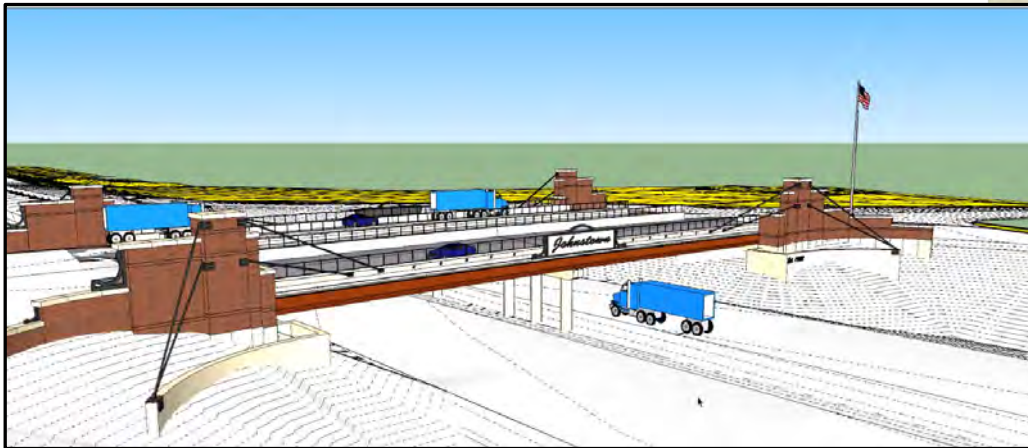




CO 60 Construction I-25 Segment 6 Update

CO 60 Interchange - Diverging Diamond Interchange

- Will have 90% Opinion of Probable Construction Cost in January
- Notice to Proceed with aesthetic improvements in Spring (Construction Package 5)





Project Progress I-25 Segment 6 Update

Roadway Work

- Asphalt Underlay and Concrete paving happening to complete Phase 1 (southbound outside widening)
- Traffic shift near LCR 16 occurred

Other Work

- Utility work is 80% complete
- ROW is ~70% complete

Design Work & Negotiations

- Design for Construction Package 7 - LCR 16 southbound onramp is 35% complete
- Construction work is 96% negotiated (CP5 and CP7 is left)
- Negotiated \$170M in construction items with RLW/SEMA with a 2.7% delta





CO 56 Construction I-25 Segment 6 Update

- Most dangerous area on North I-25
- “Flipped” the interchange to correct vertical and horizontal curves





COLORADO

Department of Transportation

North I-25 Segment 7&8 Update December 1, 2021



Segments 7&8 Status Highlights

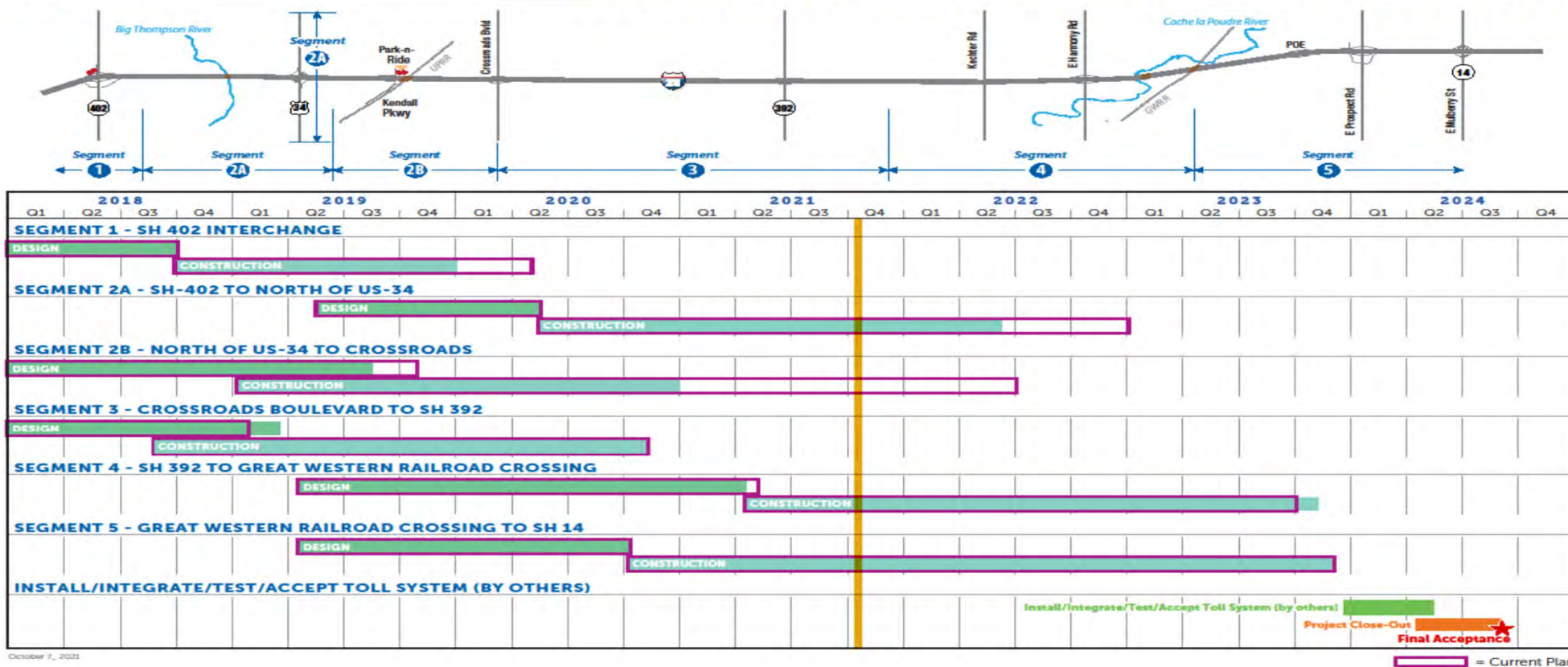
- Project has expended 59% of budget / 57% of time
- Poured Bridge Deck on NB Floodplain Bridge
- Opened new NB Harmony Off-Ramp
- Realigned the NB Harmony On-Ramp
- Paving between 34 and Crossroads
- Able to continue work with favorable weather



Segments 7&8 Schedule

EXPRESS Lanes NORTH I-25

SEGMENT 7 AND 8 — DESIGN BUILD PROJECT SCHEDULE





Construction Status of Structures

<u>SB I-25</u>	<u>NB I-25</u>	<u>E/W Crossings</u>	<u>East Frontage Rd</u>
Hillsboro		SH 402	Hillsboro
Lost Pond Dr		LCR 20	Big Thompson
Big Thompson	Big Thompson	GWRR	
Mobility Hub Box Culvert		US 34	
UPRR	UPRR	Kechter	
Floodplain Bridge	Floodplain Bridge	Prospect	
Poudre River	Poudre River		
GWRR	GWRR		

11 Structures Complete

5 Structures in Progress

5 Structures Not Yet Started



NB Floodplain Bridge





Ports of Entry





2021 Year in Review

- \$101,300,000 of work completed
- 335,000 hours worked
- 1 Recordable Safety Incident
- Kechter CLOMR approved after only 1 review cycle





2021 Year in Review - Structures

<u>SB I-25</u>	<u>NB I-25</u>	<u>E/W Crossings</u>	<u>East Frontage Rd</u>
Hillsboro		SH 402	Hillsboro
Lost Pond Dr		LCR 20	Big Thompson
Big Thompson	Big Thompson	GWRR	
Mobility Hub Box Culvert		US 34	
UPRR	UPRR	Kechter	
Floodplain Bridge	Floodplain Bridge	Prospect	
Poudre River	Poudre River		
GWRR	GWRR		

25%

50%

75%

100%

- 65,000 SF of Walls constructed
- 43,500,000 Pounds of Concrete Placed in Structures
- 5,500 Feet of Pile Driving (0 noise complaints)
- 1,382,000 Pounds of Rebar Placed



2021 Year in Review – Paving/Earthwork

- 156,000 SY of Concrete Paving placed
- (100,000 SY since September 1)
- 46,800 Dowel Bars inserted into the pavement
- 65 Miles of saw cutting
- 1,300,000 Tons of Dirt
- 101,000 Tons of Road Base
- 28,000 Tons of Asphalt

